

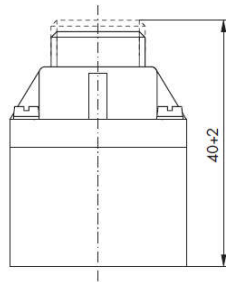
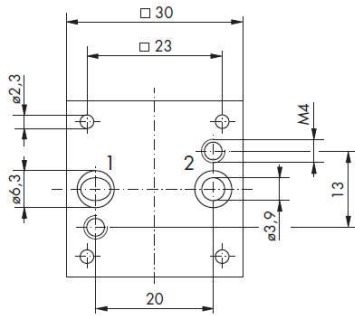
Pressure regulators 50.806

Fluid Technology

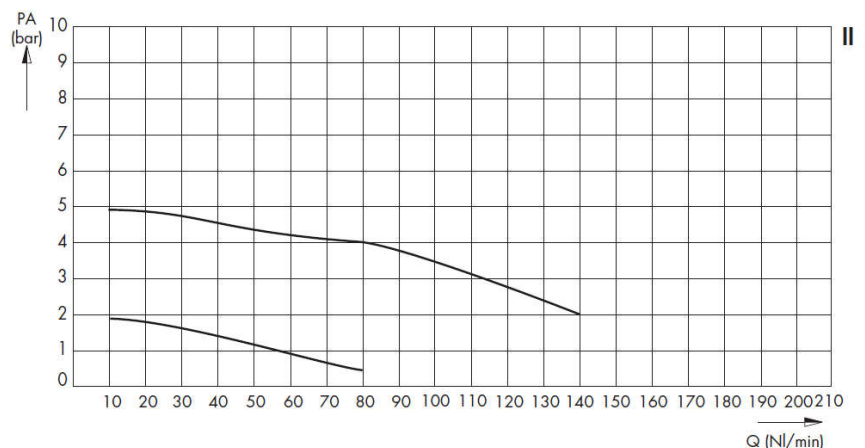
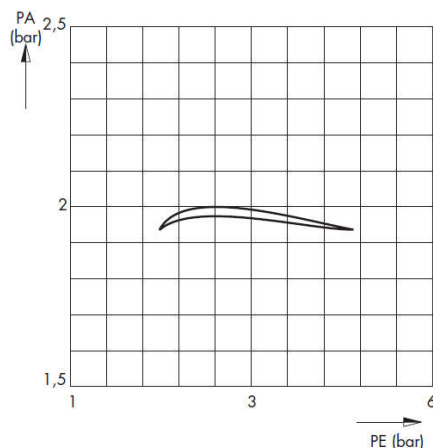
Pressure regulator plastic body for sub plate mounting
Cost-efficient precise pressure regulators



This universal pressure control valve stands out of the ordinary for its particularly good regulating characteristic and ensures a big flow rate. In its square plastic design this regulator proves to be an especially light and cost-efficient type.



Properties



PA = Output pressure
 PE = Input pressure
 Q = Flowing through

I Inlet pressure sensitivity
 Q = konst. = 5Nl/min.
 Start at PE = 3 bar and PA = 2 bar

II Flow characteristics
 PE = 8 bar → PA = 5 bar
 PE = 8 bar → PA = 2 bar

Technical Data	Pressure regulators type 50.806
Pressure range	Max. 10 bar
Pressure range of setting	0...5 bar
Ambient temperature range	0 °C...+60 °C*
Materials	Housing: POM
Sealing	Diaphragm: NBR (plies of fabric), EPDM, FKM, other on request
Operating medium	Non aggressive media, oxygen (others upon request)*
Pneumatic Connection	Flange on sub plate: 2 x dia. 3.9 mm (below)
Optional functions	Secondary pressure with bleeder port, fixed factory-settings

* See Technical Information
 We reserve the rights of modification, omission, error with respect to the products. Illustrations similar. All rights reserved by the individual copyright holders.