

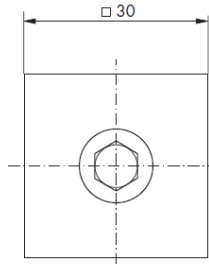
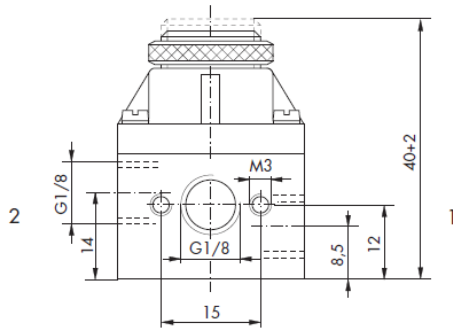
Pressure regulators 48.250

Fluid Technology

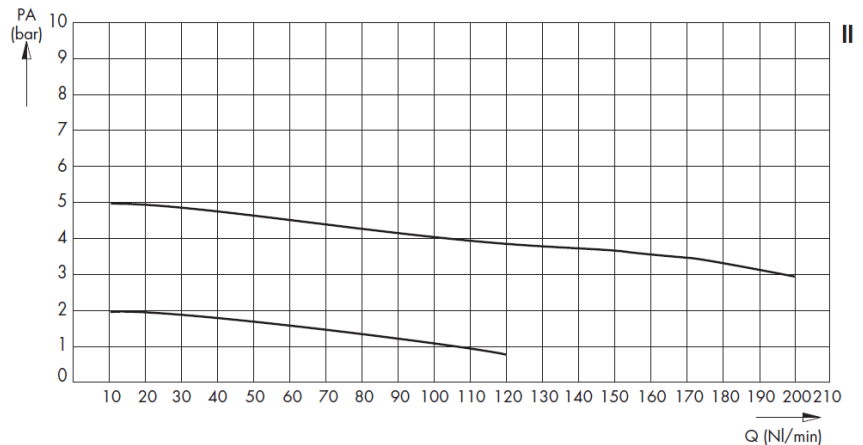
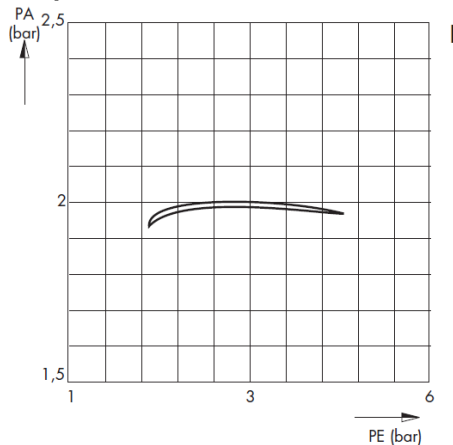
Pressure regulator with G1/8 connection

Cost-efficient precise pressure regulators

This universal pressure control valve stands out of the ordinary for its particularly good regulating characteristic and ensures a big flow rate. In its square brass design this regulator proves to be a solid device.



Properties



PA = Output pressure
PE = Input pressure
Q = Flowing through

I Inlet pressure sensitivity
Q = konst. = 5NI/min.
Start at PE = 3 bar and PA = 2 bar

II Flow characteristics
PE = 8 bar -> PA = 5 bar
PE = 8 bar -> PA = 2 bar

Technical Data	Pressure regulators type 48.250
Pressure range	Max. 10 bar
Pressure range of setting	0...5 bar
Ambient temperature range	0 °C...+60 °C*
Materials	Housing: brass nickel plated/ POM
Sealing	Diaphragm: NBR (plies of fabric), EPDM, FKM, other on request
Operating medium	Non aggressive media, oxygen (others upon request)*
Pneumatic connection	Input: 1 x G1/8, output: 3 x G1/8
Optional functions	Secondary pressure with bleeder port, fixed factory-settings

* See Technical Information

We reserve the rights of modification, omission, error with respect to the products. Illustrations similar. All rights reserved by the individual copyright holders.