

## Rod gripper AlNiCo

## Permanent Magnet

4031 12 ... 65

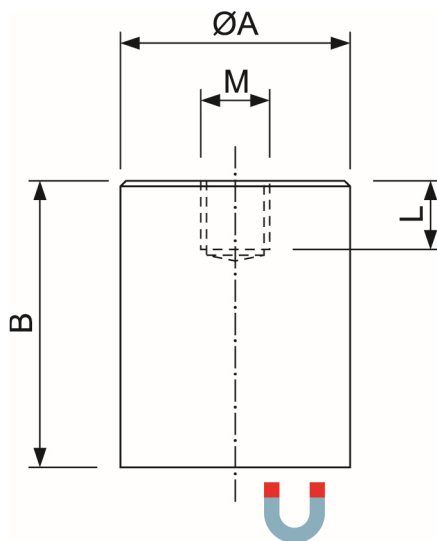
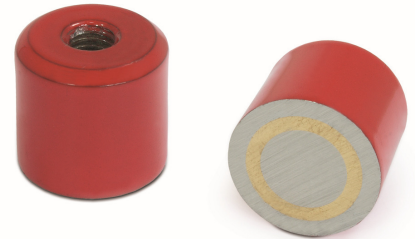
### Rod gripper in steel housing

Rod gripper with an AlNiCo magnet in a steel housing painted red with internal thread.

The maximum adhesive force is achieved when the entire surface is applied to a metal substrate.

This rod gripper has central internal thread.

The maximum operating temperature is 220°C.



#### Benefits at a glance

- age-free
- Adhesive power is retained indefinitely
- Limitation of spatial effect to the magnetic field
- High temperatures

Special designs or other magnetic materials are possible on request

Part number	Dimensions (mm)		Thread MxL (mm)	Holding Power (N)	Weight (g)	Temperature (°C)
	Ø A ± 0,2	B				
4031 12	12,5	16	M4 x 7	20	15	220
4031 17	17	16	M6 x 5	26	29	220
4031 21	21	19	M6 x 7	40	50	220
4031 27	27	25	M6 x 9	65	98	220
4031 35	35	30	M6 x 9	150	205	220
4031 65	65	43	M12 x 13	400	1060	220

Changes, omissions, errors in relation to the products reserved. Similar pictures. All rights belong to the respective rights holders. The adhesive forces have been determined on a ground plate (material St37) with a thickness of 10mm when the magnet is pulled off vertically (1kg approximately 10N). Deviations of up to -10% of the specified values are possible. When installing the bar gripper in iron, the adhesive force is reduced by approx. 15% due to magnetic short circuits. In order to avoid this, a distance D from the brass casing of the bar gripper to the iron must be maintained.