

KENDRION SOLUTIONS

Precise oxygen dosing for maximum patient safety

Flow regulator for manual oxygen supply in anesthetic devices

A reliable oxygen supply is essential in anesthesia. In the event of a power interruption, quick and manual intervention is critical to ensure continuous oxygen supply to the patient. This is where Kendrion's specially designed throttle valve comes into play, enabling manual control of the oxygen supply. With a flow range of 0 to 12 l/min and a rotation angle of 0° to 270°, the valve ensures precise oxygen dosing. Due to its compact and space-saving design, the flow regulator can be easily integrated into existing device designs.

High-quality, oxygen-compatible materials ensure long service life. The self-inhibiting shaft prevents the set flow rate from being unintentionally changed due to vibrations or contact, thus providing maximum operational safety. A microswitch detects whether the flow regulator is open or closed, allowing the anesthesia device's central control unit to monitor the regulator electrically. This ensures smooth

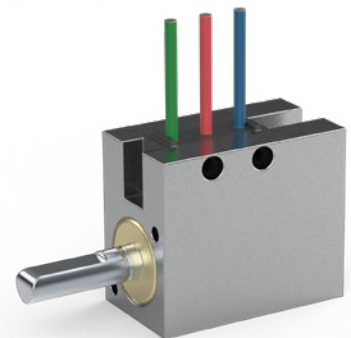
and safe manual operation in case of a power failure.

Product features

- Flow: 0 to 12 l/min
- Pressure range: 2.2 to 6 bar
- Medium: Oxygen
- Rotation angle: 0 to 270° for precise adjustment
- Ambient temperature: -20 to +65°C
- UL-listed materials
- Includes electrical signal output
- Self-inhibiting shaft for reliable performance

Further application areas

- Medical ventilation systems in hospitals
- Mobile oxygen supply (transport ventilation systems)
- Home ventilation devices
- Oxygen concentrators
- Incubators



Kendrion Kuhnke Automation GmbH

Lütjenburger Strasse 101
23714 Malente
Germany

T +49 4523 402-0
F +49 4523 402-201
sales-ics@kendrion.com
www.kendrion.com

136/25

