

KENDRION SOLUTIONS

Precise dosing in InVitro diagnostics

The Power Pinch Valve with its high clamping force

Reliability and precision in InVitro diagnostics are particularly important in order to achieve clear results. With its high clamping force of 42 N, the Power Pinch Valve enables precise dosing and regulation of the flow of for instance blood or urine. The valve can also be used for more sensitive or aggressive media, as there is a secure separation between the medium and the valve. The flow is possible in both directions without the risk of cross-contamination or dead spaces occurring.

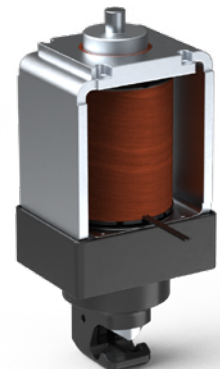
Due to the high clamping force, both PVC and silicone tubing with an outer diameter of 4mm to 8mm can be clamped. The Power Pinch Valve is available in two ready-to-install versions: Normally Open (NO) and Normally Closed (NC) with manual release. Together with its compact design and flexible temperature resistance, the Power Pinch Valve can be integrated into a wide range of medical devices. The biocompatible application is possible due to the use of specific materials.

Product features

- High clamping force (42 N)
- Precise flow control
- Medium separated from the valve
- No dead spaces
- Universal application for tubes of different materials with a diameter of 4 mm to 8 mm
- Compact construction size of 50x64x135 mm
- Can be used in environments ranging from +5°C to +40°C
- Biocompatibility
- Sensors for end position detection on request

Further application areas

- Food industry
- Agricultural industry and irrigation systems
- Chemical and pharmaceutical industries



Kendrion Kuhnke Automation GmbH

Lütjenburger Strasse 101
23714 Malente
Germany

T +49 4523 402-0
sales@kendrion.com
www.kendrion.com

142/'25

