

Flatgripper hard ferrite

Permanent Magnet

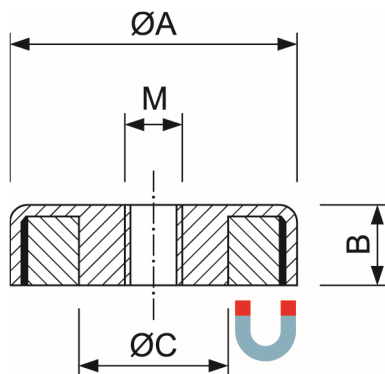
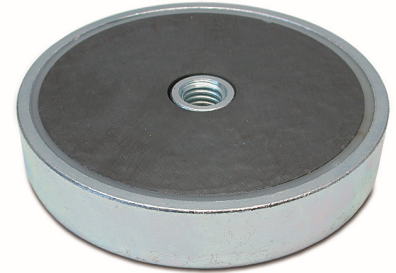
4043 2504 ... 8010

Flatgripper with internal thread

Flatgripper magnet with a hard ferrite magnet in a steel housing. The metallic housing increases the adhesive force of the permanent magnet. The maximum adhesive force of this magnetic system is achieved when it is placed over the entire surface on a metal base.

This series of gripper magnets is designed with an internal thread.

The maximum operating temperature for hard ferrite magnets is 200°C



Benefits at a glance

- inexpensive
- age-free
- Adhesive power is retained indefinitely
- Limitation of spatial effect to the magnetic field
- Rubber sleeves can be used to prevent slipping on a smooth surface

Special designs or other magnetic materials are possible on request

Part number	Dimensions (mm)			Thread (M)	Holding power (N)	Weight (g)	Temperature (°C)
	ØA	B	C				
4043 2504	25	7	5,2	M4	36	18	200
4043 3204	32	7	5,2	M4	75	29	200
4043 4004	40	8	5,2	M4	90	53	200
4043 5006	50	10	12	M6	170	94	200
4043 4008	50	10	12	M8	170	94	200
4043 6308	63	14	13	M8	290	206	200
4043 8008	80	18	14,5	M8	550	472	200
4043 8010	80	18	14,5	M10	550	466	200

Changes, omissions, errors in relation to the products reserved. Similar pictures. All rights belong to the respective rights holders. The adhesive forces have been determined on a ground plate (material St37) with a thickness of 10mm when the magnet is pulled off vertically (1kg approximately 10N). Deviations of up to -10% of the specified values are possible.