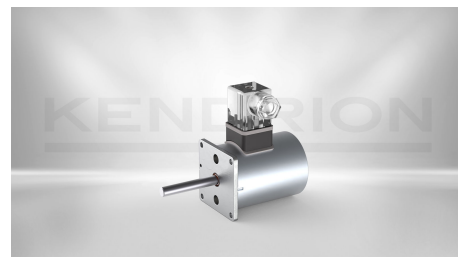


ROTARY SOLENOIDS

Rotary Solenoid PDM050

PDM050.000039 (bistable)

The PDM050.000039 is a rotary solenoid with latching end positions (bistable version). It is characterized by extremely fast switching times and a high holding torque.



Want to learn more about how the rotary solenoids work and their applications?

[Go to Website: Bistable Rotary Solenoid](#)

DESCRIPTION	VALUE
Design	bistable
Rotation angle	30°
Return mechanism	Electrical
Duty cycle	10 %
Housing type	Round
Nominal voltage	24 V
Power consumption	100 W
Thermal class	B 130° C
Connection	Plug
Dimensions	Diameter 55 / Length 73 mm

CONTACT

Sales Team Kendrion Malente

+49 (0) 4523 402-0

sales-ics@kendrion.com

PRODUCT

<https://www.kendrion.com/en/productfinder/group/product/rotary-solenoids/pdm050000039-bistable>