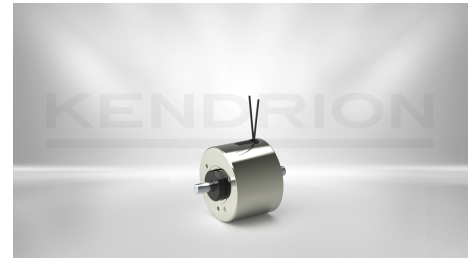


ROTARY SOLENOIDS

Rotary Solenoid D 69

D 69-BOR-F-DS9420-24V DC 100 ED

Rotary solenoid in cylindrical design with shafts on both sides and return spring. This preferred type is available in small quantities from stock. Further rotation angle, shaft types or other voltages are available on request. You will find more information in the download area.



Want to learn more about how the rotary solenoids work and their application?

[Go to website: Monostable rotary solenoids](#)

DESCRIPTION	VALUE
Design	monostable
Rotation angle	95°
Initial torque	1.3 Ncm
End torque	15 Ncm
Return mechanism	Spring return
Housing type	round
Nominal voltage	24 V
Duty cycle	100 %
Power consumption	13.4 W
Thermal class	B 130 °C
Connection	Leads 20 cm
Dimensions	Diameter 60 / Length 41,5 mm

Solenoid weight	600 g
Dynamic moment of inertia	$3.5 \times 10^{-6} \text{ kg m}^2$

CONTACT

Sales Team Kendrion Malente

+49 (0) 4523 402-0

sales-ics@kendrion.com

PRODUCT

<https://www.kendrion.com/en/productfinder/group/product/rotary-solenoids/d-69-bor-f-ds9420-24v-dc-100-ed>