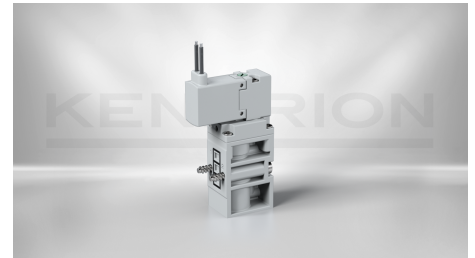


## PILOT-OPERATED SOLENOID VALVES

### Solenoid valves, pilot operated Type 63.1V

63.153.50V 24VDC

15 mm width, different electrical connection possibilities. Manual override optional, offered as rotary knob to be adjusted via flat-tip screwdriver or as "paddle" for the use without additional tools



DESCRIPTION	VALUE
Function	3/2-way NO
Pressure range	2-8 bar
Nominal orifice	2.6 mm
Type of electric connection	Plug without diode
Kv-value	3.2 l/min
Size	15 mm
Actuation type	elektrisch betätigt
Duty cycle	100 % ED
Medium	Filtered (5 µm), lubricated and non lubricated air
Nominal power	1.0 W
Nominal voltage	24 V DC
Nominal current	42 mA
Type of pneumatic connection	Flange
Returning mechanism	Spring
Protection class	IP51
Ambient temperature	-20... +60 °C
Valve type	Poppet valve
Materials	Housing PBT, Seal NBR
Actuation	pilot controlled

**Manual override**

Usable with flat-tip screwdriver

## CONTACT

Sales Team Kendrion Malente

+49 (0) 4523 402-0

[sales-ics@kendrion.com](mailto:sales-ics@kendrion.com)

## PRODUCT

<https://www.kendrion.com/en/productfinder/group/product/pilot-operated-solenoid-valves/6315350v-24vdc>