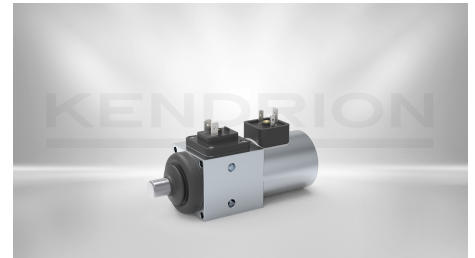


## LOCKING SOLENOIDS

### Locking Solenoid LLV050

1333585

Locking solenoids of the LLV series are characterized by high forces, compact design and a lateral force carrying capacity of up to 4,000 N. The electromagnetic locking units were specially developed for use in protective devices. They are available in the versions currentless locking (CL; spring force keeps bolt in locking position) and currentless unlocking (CU; spring force keeps bolt open, locked when energized). Solenoid armature and locking bolt are guided separately in maintenance-free bearings. The latch bolt is made of stainless. The microswitch, which is installed directly in the latch housing, signals the respective position of the latch bolt approx. 0.5 mm to 1 mm after leaving the stroke start position or before reaching the stroke end position.



The locking solenoids are manufactured and tested according to DIN VDE 0580/07.2000.

DESCRIPTION	VALUE
Nominal voltage	24 V
Duty cycle	100 %
Power consumption	18.3 W
Stroke	10 mm
Initial force	7 N
Return mechanism	Spring
Dimensions (length, width, height)	119,50,50 mm
Radial work load bearing	3000 N
Currentless locking?	yes
Emergency opener	no
Thermal class	F 155

## **CONTACT**

Sales Team Donaueschingen

+49 (0) 771 80093770

[sales-ims@kendrion.com](mailto:sales-ims@kendrion.com)

## **PRODUCT**

<https://www.kendrion.com/en/productfinder/group/product/locking-solenoids/1333585>