

LINEAR SOLENOIDS

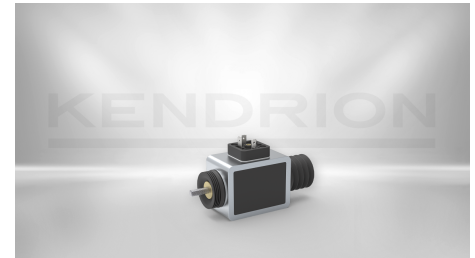
Frame Linear Solenoid LCL 40x50

43040022

The D-frame solenoid LCL is characterized by a compact design, low power consumption and short switching times. A long service life is promoted by the precision steel tube housing and maintenance-free armature bearings. The frame solenoid can be installed in any position, with the force preferably being applied in the axial direction only. It is fastened via threaded holes on the side or on the face.

As standard, the frame linear solenoid has a chemically nickel-plated armature and a plastic-molded solenoid coil and has protection class IP 40. Versions with bellows achieve protection class IP54.

Other voltages are possible on request.



DESCRIPTION	VALUE
Duty cycle	100 %
Power consumption	15.9 W
Stroke	20 mm
Initial force	9 N
Nominal voltage	24 V
End force	20 N
Return spring	Optional via spring kit
Dimensions (length, width, height)	76 x 40 x 50 mm
Length	76
Width	40
Height	50
Design	No
Protection class	IP 54/65

Thermal class	B 130
Connection	Plug
Solenoid weight	660 g
Armature weight	125 g
Product Line	Single Stroke Linear Solenoids

CONTACT

Sales Team Kendrion IAC

+49 (0) 4523 402-0

sales@kendrion.com

PRODUCT

<https://www.kendrion.com/en/productfinder/group/product/linear-solenoids/43040022>