

## LINEAR SOLENOIDS

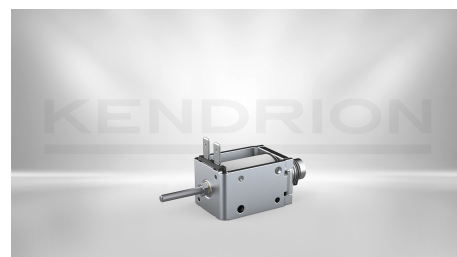
### Frame Linear Solenoid LCL 28x33

4000628AE34V02

The D-frame solenoid LCL is characterized by a compact design, low power consumption and short switching times. A long service life is promoted by the precision steel tube housing and maintenance-free armature bearings. The frame solenoid can be installed in any position, with the force preferably being applied in the axial direction only. It is fastened via threaded holes on the side or on the face.

As standard, the frame linear solenoid has a chemically nickel-plated armature and a plastic-molded solenoid coil and has protection class IP 40. Versions with bellows achieve protection class IP54.

Other voltages are possible on request.



DESCRIPTION	VALUE
Duty cycle	100 %
Power consumption	13.4 W
Stroke	10 mm
Initial force	3.5 N
Nominal voltage	24 V
End force	10 N
Return spring	Optional via spring kit
Dimensions (length, width, height)	48.3 x 34 x 28 mm
Length	48.3
Width	34
Height	28
Design	No
Protection class	IP 00

Thermal class	F 155
Connection	Plug
Product Line	Single Stroke Linear Solenoids

## CONTACT

Sales Team Kendrion Malente

+49 (0) 4523 402-0

[sales@kendrion.com](mailto:sales@kendrion.com)

## PRODUCT

<https://www.kendrion.com/en/productfinder/group/product/linear-solenoids/4000628ae34v02>