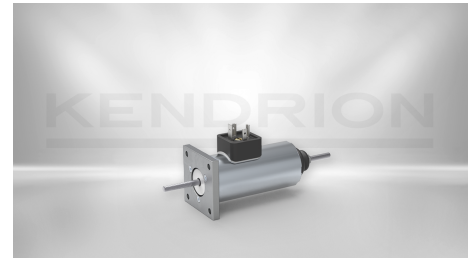


## LINEAR SOLENOIDS

# Reversible Linear Solenoid LHR040

1192438

Reversible Linear Solenoids of the LHR series are characterized by high performance. They are delivered with a horizontal characteristic curve. The armature is led on both sides with maintenance-free precision bearings coated with Teflon. This results in a very high resistance to wear, granting consistent solenoid performance throughout a long service life. The reversing solenoids are available in different versions.



DESCRIPTION	VALUE
Duty cycle	100 %
Power consumption	19 W
Stroke	8 mm
Initial force	10 N
Nominal voltage	24 V
End force	25 N
Return spring	No
Dimensions (length, width, height)	94 x 40 x 40 mm
Length	94
Width	40
Height	40
Design	No
Protection class	IP 54
Thermal class	F 155
Connection	Plug
Solenoid weight	700 g
Armature weight	150 g

**Product Line**

Reversible Linear Solenoids

## **CONTACT**

Sales Team Kendrion Malente

+49 (0) 4523 402-0

[sales-ics@kendrion.com](mailto:sales-ics@kendrion.com)

## **PRODUCT**

<https://www.kendrion.com/en/productfinder/group/product/linear-solenoids/1192438>