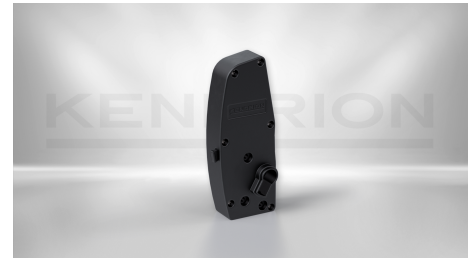


## DOOR LOCKS

### Rotary Door Lock

RL 24V DC

A mechanical rotary door lock in combination with powerful bi-stable solenoid, end position sensors for the closed and the locked position of the door, as well as central connectors and an emergency opener results in a highly compact unit. High-quality plastics contribute to increased mechanical stability and long product life even with high ambient temperatures



DESCRIPTION	VALUE
Usage of the locking	Rotating lock / cam lock
Way of locking	active-locked / bistable
Nominal voltage	24 V
Duty cycle	2 %
Power consumption	24 W
Max. static holding force	400 N
Max. load force for electrical unlocking	400 N
Connection	TE Connectivity VAL-U-LOK 1-2296207-0
Snap-in function	No
Emergency opener	Yes
Operating temperature	0 - 80 °C
Dimensions	174 x 70 x 32 mm

## CONTACT

Sales Team Kendrion Malente

+49 (0) 4523 402-0

[sales-ics@kendrion.com](mailto:sales-ics@kendrion.com)

## PRODUCT

<https://www.kendrion.com/en/productfinder/group/product/door-locks/rl-24v-dc>