

DOOR LOCKS

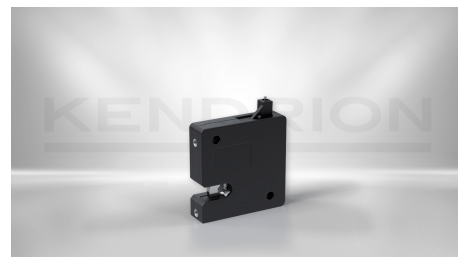
Solenoid Door Lock, Active-Locked (AL)

AL-7011-F-24V DC 10%ED

The compact solenoid lock AL convinces with a very high static holding force.

The solenoid door lock integrates a high-performance linear solenoid, which has bistable design.

The bistable design enables that the door will be locked only if the solenoid is energized for a short time. In order to unlock, the solenoid needs to be energized for a short time as well. The polarity needs to be reversed.



DESCRIPTION	VALUE
Usage of the locking	Snap in / linear
Way of locking	Active-locked / bistable
Nominal voltage	24 V
Duty cycle	10 %
Power consumption	36 W
Max. static holding force	1600 N N
Max. load force for electrical unlocking	400 N
Connection	Lead 18 cm
Snap-in function	Yes
Emergency opener	Yes
Operating temprature	0 - 80 °C
Dimensions	70 x 70 x 18 mm

CONTACT

Sales Team Kendrion Malente

+49 (0) 4523 402-0

sales-ics@kendrion.com

PRODUCT

<https://www.kendrion.com/en/productfinder/group/product/door-locks/al-7011-f-24v-dc-10ed>