

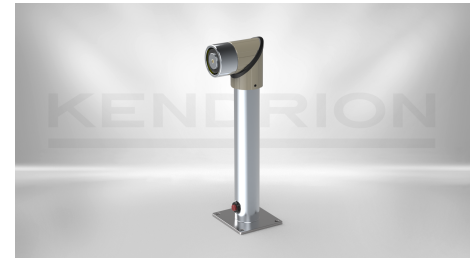
DOOR HOLDING MAGNETS

Door holding magnets GTR050

GTR050.370022

The door holding magnets are mainly used as holding devices on fire protection doors. They hold them in place when open. Controlled by a fire alarm or smoke protection control panel, they release the closures by interrupting the power supply in the event of a fire hazard. Product features:

- Coil vacuum encapsulated (IP65) - VdS quality-controlled -
- Tested according to EN1155 & EN 14637 - Optimised design and quality - Accessories: Anchor plate



DESCRIPTION	VALUE
Nominal voltage	24 V
Duty cycle	100 %
Power consumption	1.5 W
Holding force	490 N
Design	Aluminium swivel head 300 mm floor mounting
Connection	terminal clamp

PRODUCT

<https://www.kendrion.com/en/productfinder/group/product/door-holding-magnets/gtr050370022>