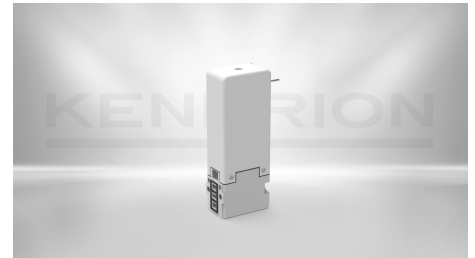


## DIRECT-OPERATED SOLENOID VALVES

### Solenoid Valve Type 68

68.030.51

Direct acting valve, 15 mm width, two individual electrical connection possibilities.



DESCRIPTION	VALUE
Function	3/2-way NC
Pressure range	0 - 5 bar
Nominal orifice	1.9 mm
Type of pneumatic connection	Flange
Kv-value	1.2 l/min
Size	15 mm
Actuation type	electrically actuated
Duty cycle	100 % ED
Type of electric connection	Plug pins / pins
Medium	Filtered (5 µm), lubricated and non lubricated air
Nominal power	3 W
Nominal voltage	24 V DC
Returning mechanism	Spring
Protection class	IP65
Ambient temperature	-10 ... +50 °C
Valve type	Poppet valve
Materials	Base: PBT, seal: FKM
Actuation	directly controlled
Identification number	73790

## **CONTACT**

Sales Team Kendrion Malente

+49 (0) 4523 402-0

[sales-ics@kendrion.com](mailto:sales-ics@kendrion.com)

## **PRODUCT**

<https://www.kendrion.com/en/productfinder/group/product/direct-operated-solenoid-valves/6803051>