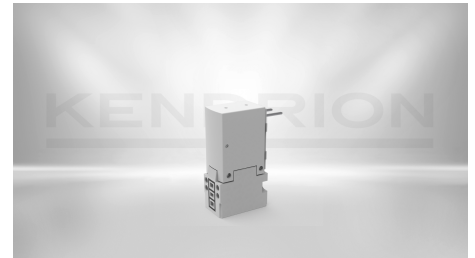


DIRECT-OPERATED SOLENOID VALVES

Solenoid Valve Type 63.1

63.134.10

10 mm width, three different electrical connection possibilities. Optionally with manual override operation.



DESCRIPTION	VALUE
Function	3/2-way NC
Pressure range	0 - 8 bar
Nominal orifice	0.5 mm
Type of pneumatic connection	Flange
Kv-value	0.11 l/min
Size	10 mm
Actuation type	electrically actuated
Duty cycle	100 % ED
Type of electric connection	Plug pins / pins
Medium	Filtered (5 µm), lubricated and non lubricated air
Nominal power	1 W
Nominal voltage	24 V DC
Nominal current	153 mA
Returning mechanism	Spring
Protection class	IP65
Ambient temperature	-10 ... +50 °C
Valve type	Poppet valve
Materials	Base: PBT, seal: NBR
Actuation	directly controlled
Identification number	148273

CONTACT

Sales Team Kendrion Malente

+49 (0) 4523 402-0

sales-ics@kendrion.com

PRODUCT

<https://www.kendrion.com/en/productfinder/group/product/direct-operated-solenoid-valves/6313410>