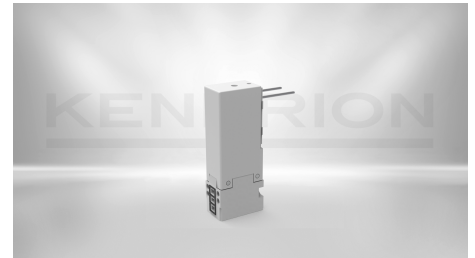


DIRECT-OPERATED SOLENOID VALVES

Bistable Solenoid Valve Type 63.0 BI

63.032.10 BI

10 mm width, bistable latching solenoid valve or bistable 3/2-way solenoid valve which require only a short electrical power pulse to change the state. On request other sealing materials like EPDM or FKM are possible.



DESCRIPTION	VALUE
Function	2/2-way Bistable
Pressure range	0 - 8 bar
Nominal orifice	0.5 mm
Type of pneumatic connection	Flange
Kv-value	0.11 l/min
Size	10 mm
Actuation type	electrically actuated
Duty cycle	100 % ED
Type of electric connection	Plug pins / pins
Medium	Filtered (5 µm), lubricated and non lubricated air
Nominal power	2.9 W
Nominal voltage	24 V DC
Returning mechanism	Spring
Protection class	IP65
Ambient temperature	-10 ... +50 °C
Valve type	Poppet valve
Materials	Base: PBT, seal: NBR
Actuation	directly controlled

CONTACT

Sales Team Kendrion Malente

+49 (0) 4523 402-0

sales-ics@kendrion.com

PRODUCT

<https://www.kendrion.com/en/productfinder/group/product/direct-operated-solenoid-valves/6303210-bi>