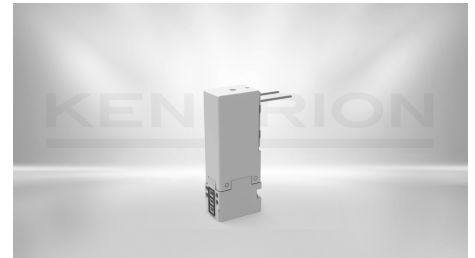


## DIRECT-OPERATED SOLENOID VALVES

### Solenoid Valve Type 63.0

63.030.30

10 mm width, three different electrical connection possibilities. Optionally with manual override operation.



DESCRIPTION	VALUE
Function	3/2-way NC
Pressure range	0 - 5 bar
Nominal orifice	0.9 mm
Type of pneumatic connection	Flange
Kv-value	0.33 l/min
Size	10 mm
Actuation type	electrically actuated
Duty cycle	100 % ED
Type of electric connection	Plug pins / pins
Medium	Filtered (5 µm), lubricated and non lubricated air
Nominal power	1.8 W
Nominal voltage	24 V DC
Nominal current	153 mA
Returning mechanism	Spring
Protection class	IP65
Ambient temperature	-10 ... +50 °C
Valve type	Poppet valve
Materials	Base: PBT, seal: NBR
Actuation	directly controlled
Identification number	65668

## **CONTACT**

Sales Team Kendrion Malente

+49 (0) 4523 402-0

[sales-ics@kendrion.com](mailto:sales-ics@kendrion.com)

## **PRODUCT**

<https://www.kendrion.com/en/productfinder/group/product/direct-operated-solenoid-valves/6303030>