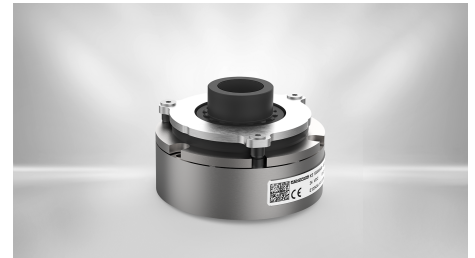


BRAKES

Spring Applied Brake - Servo Line

KS 10103A00-0001

The spring-applied brake of the Servo Line series was developed for integrated installation in servo motors. The holding brake with emergency stop function of the Servo Line is designed for both, A-side and B-side integrated installation in servo drives for dry running.



Features

- Rated air gap tolerance is reduced to a few hundredths of a millimeter, providing enhanced power density
- Toothed hub-friction disc connection with minimal backlash
- Standard version suitable for flange mounting and face mounting
- Guaranteed minimum torque over life-time

DESCRIPTION	VALUE
Brake size	03
Torque	0.27 Nm
Torque definition	M4 (static)
Operation mode	Holding Brake
Nominal voltage	24 V
Nominal power	6.6 W
Max. switching energy per ES	1 J
Number of emergency stops	500
Total work	0,5 kJ
Temperature range	-15...120°C
Max. rotation speed	10000 min ⁻¹
E-Stop rotation speed	6000 min ⁻¹
Backlash	< 1°
Thermal class	F
IP Protection class	IP00
Weight	0.13 kg
Brake type	KS 101
Armature type	-
Hub type	Short
Hand release	-
Counter friction part	Flange
PWM control	possible
Outer diameter	32 mm
Inner diameter	8.2 mm
Lenght	28.9 mm
Hub diameter	6 mm
Keyway	yes
Pitch circle front side	28 mm
Pitch circle flange side	28 mm

Product Line

Servo Line

CONTACT

Sales Team Kendrion Villingen

+49 (0) 7721 877-1417

sales-villingen-ib@kendrion.com

PRODUCT

<https://www.kendrion.com/en/productfinder/group/product/brakes/ks-10103a00-0001>