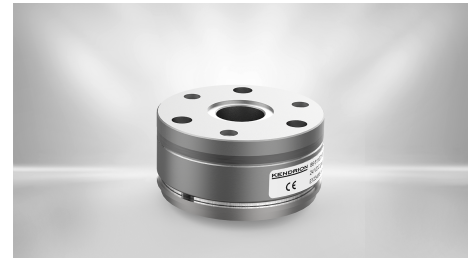


BRAKES

Permanent Magnet Brake - PM Line

86 62114H00-0041

The PM Line is a permanent magnet brake for direct current in which the braking effect is generated by a permanent magnetic field (system opened by electro-magnetic force). The brake thus acts in currentless state when switched off. To neutralize the braking effect, the permanent magnetic field is displaced by an opposing electromagnetic field. These brakes are particularly suitable for applications in the field of servomotors as holding brakes with emergency stop function.



Features

- Safe, residual torque-free opening in any mounting position
- Backlash-free transmission of the braking torque

DESCRIPTION	VALUE
Brake size	14
Torque	80 Nm
Torque definition	M4 (static)
Operation mode	Holding Brake
Nominal voltage	24 V
Nominal power	27 W
Max. switching energy per ES	1450 J
Number of emergency stops	500
Total work	725 kJ
Temperature range	-5°C...120°C
Max. rotation speed	8000 min ⁻¹
E-Stop rotation speed	3000 min ⁻¹
Backlash	0°
Thermal class	F
IP Protection class	IP00
Weight	4.1 kg
Brake type	621
Armature type	300
Hub type	-
Hand release	-
Counter friction part	-
PWM control	possible
Outer diameter	162 mm
Inner diameter	70 mm
Length	84 mm
Hub diameter	53 mm
Keyway	-
Pitch circle flange side	151 mm
Product Line	PM Line

CONTACT

Sales Team Kendrion Villingen

+49 (0) 7721 877-1417

sales-villingen-ib@kendrion.com

PRODUCT

<https://www.kendrion.com/en/productfinder/group/product/brakes/86-62114h00-0041>