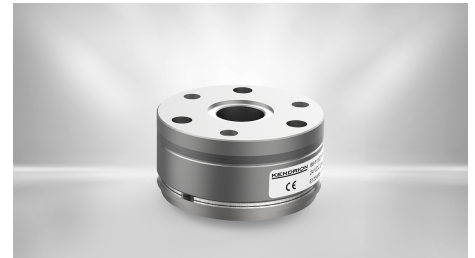


BRAKES

Permanent Magnet Brake - PM Line

86 62111H00-0045

The PM Line is a permanent magnet brake for direct current in which the braking effect is generated by a permanent magnetic field (system opened by electro-magnetic force). The brake thus acts in currentless state when switched off. To neutralize the braking effect, the permanent magnetic field is displaced by an opposing electromagnetic field. These brakes are particularly suitable for applications in the field of servomotors as holding brakes with emergency stop function.



Features

- Safe, residual torque-free opening in any mounting position
- Backlash-free transmission of the braking torque

DESCRIPTION	VALUE
Brake size	11
Torque	40 Nm
Torque definition	M4 (static)
Operation mode	Holding Brake
Nominal voltage	24 V
Nominal power	20.2 W
Max. switching energy per ES	850 J
Number of emergency stops	500
Total work	425 kJ
Temperature range	-5°C...120°C
Max. rotation speed (depending on max. switching work during emergency stop)	10000 min ⁻¹
E-Stop rotation speed	3000 min ⁻¹
Backlash	0°
Thermal class	F
IP Protection class	IP00
Weight	1.4 kg
Brake type	621
Armature type	400
Hub type	-
Hand release	-
Counter friction part	-
PWM control	possible
Outer diameter	132 mm
Inner diameter	50 mm
Length	45 mm
Hub diameter	25 mm
Keyway	yes
Pitch circle flange side	121 mm
Product Line	PM Line

CONTACT

Sales Team Kendrion Villingen

+49 (0) 7721 877-1417

sales-villingen-ib@kendrion.com

PRODUCT

<https://www.kendrion.com/en/productfinder/group/product/brakes/86-62111h00-0045>