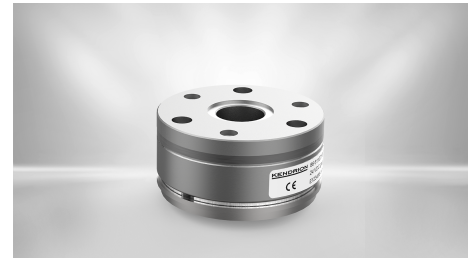


BRAKES

Permanent Magnet Brake - PM Line

86 62104H00-0005

The PM Line is a permanent magnet brake for direct current in which the braking effect is generated by a permanent magnetic field (system opened by electro-magnetic force). The brake thus acts in currentless state when switched off. To neutralize the braking effect, the permanent magnetic field is displaced by an opposing electromagnetic field. These brakes are particularly suitable for applications in the field of servomotors as holding brakes with emergency stop function.



Features

- Safe, residual torque-free opening in any mounting position
- Backlash-free transmission of the braking torque

DESCRIPTION	VALUE
Brake size	04
Torque	2.2 Nm
Torque definition	M4 (static)
Operation mode	Holding Brake
Nominal voltage	24 V
Nominal power	8.2 W
Max. switching energy per ES	200 J
Number of emergency stops	500
Total work	100 kJ
Temperature range	-5°C...120°C
Max. rotation speed	12000 min ⁻¹
E-Stop rotation speed	3000 min ⁻¹
Backlash	0°
Thermal class	F
IP Protection class	IP00
Weight	0.19 kg
Brake type	621
Armature type	300
Hub type	-
Hand release	-
Counter friction part	-
PWM control	possible
Outer diameter	62.5 mm
Inner diameter	13 mm
Length	40.7 mm
Hub diameter	8 mm
Keyway	yes
Pitch circle flange side	54 mm
Product Line	PM Line

CONTACT

Sales Team Kendrion Villingen

+49 (0) 7721 877-1417

sales-villingen-ib@kendrion.com

PRODUCT

<https://www.kendrion.com/en/productfinder/group/product/brakes/86-62104h00-0005>