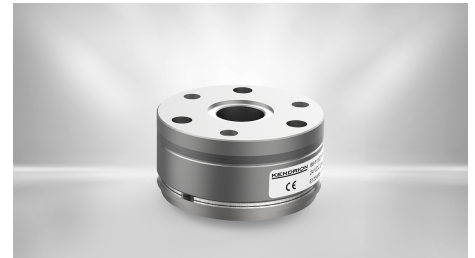


BRAKES

Permanent Magnet Brake - PM Line

86 61104H00-0031

The PM Line is a permanent magnet brake for direct current in which the braking effect is generated by a permanent magnetic field (system opened by electro-magnetic force). The brake thus acts in currentless state when switched off. To neutralize the braking effect, the permanent magnetic field is displaced by an opposing electromagnetic field. These brakes are particularly suitable for applications in the field of servomotors as holding brakes with emergency stop function.



Features

- Safe, residual torque-free opening in any mounting position
- Backlash-free transmission of the braking torque

| DESCRIPTION | VALUE |
|--|-------------------------|
| Brake size | 04 |
| Torque | 2.2 Nm |
| Torque definition | M4 (static) |
| Operation mode | Holding Brake |
| Nominal voltage | 24 V |
| Nominal power | 8 W |
| Max. switching energy per ES | 200 J |
| Number of emergency stops | 500 |
| Total work | 100 kJ |
| Temperature range | -5°C...120°C |
| Max. rotation speed (depending on max. switching work during emergency stop) | 12000 min ⁻¹ |
| E-Stop rotation speed | 3000 min ⁻¹ |
| Backlash | 0° |
| Thermal class | F |
| IP Protection class | IP00 |
| Weight | 0.19 kg |
| Brake type | 611 |
| Armature type | 400 |
| Hub type | - |
| Hand release | - |
| Counter friction part | - |
| PWM control | possible |
| Outer diameter | 39.5 mm |
| Inner diameter | 13 mm |
| Length | 29.6 mm |
| Hub diameter | 8 mm |
| Keyway | yes |
| Pitch circle front side | 32.5 mm |
| Product Line | PM Line |

CONTACT

Sales Team Kendrion Villingen

+49 (0) 7721 877-1417

sales-villingen-ib@kendrion.com

PRODUCT

<https://www.kendrion.com/en/productfinder/group/product/brakes/86-61104h00-0031>