

Bi-stable latching valve

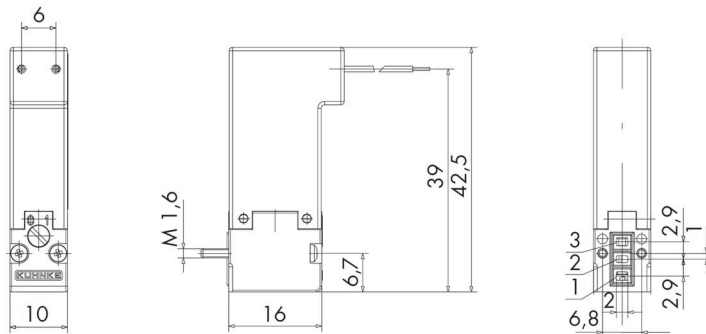
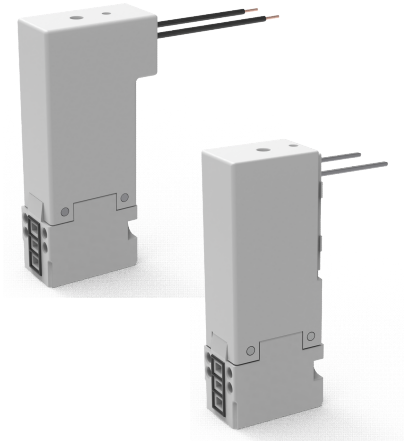
Fluid Technology

10mm bi-stable solenoid valve

The 63.0 bi-stable solenoid valve has been specially developed for the energy-efficient and quiet switching of gases. A short electrical pulse is sufficient to switch the valve and makes the valves best suited even for battery operated applications. With a flow rate of up to 40 l / min air, this valve meets the high quality requirements of medical and analysis technology. The compact, cost-effective design and the possibility of adapting the valve according to customer requirements ensure that it can be fast and easily integrated into existing applications.

Properties

- Energy saving
- Compact design
- Cost efficient
- Flexible customization



Technical data*	10 mm bi-stable solenoid valve, 63.0 series				
Voltage supply (U _{Nom})	24 V DC (12 V DC)**				
Power consumption (P _{Nom})	max. 3W**				
Pressure range (p)	0...8 bar (depending on orifice size)				
Flow range (Q _n)	0...40 NI/min				
Orifices	0,5 mm	0,7 mm	0,9 mm	1,0 mm	1,2 mm
Nominal pressure	8 bar	8 bar	6 bar	5 bar	4 bar
Kv-value	0,11 l/min	0,23 l/min	0,33 l/min	0,40 l/min	0,65 l/min
Media	Air, neutral gases; liquids and oxygen on request				
Functions	Latching (bi-stable), 3/2 or 2/2-way				
Sealing	NBR, FPM or EPDM**				
Pneumatic connection	Flange				
Electrical connection	Pin (∅0,64) or flying leads (0,14 mm ² , length: 500mm)				
Ambient temperature	-10°C ... +50°C				
Protection classification	IP 40, IP 65 as wire version and assigned pneumatic connections				
Dimension (H x W x D)	42,5 mm x 10 mm x 20 mm (wire version)				

* We reserve the rights of modification, omission, error with respect to the products. Illustrations similar. All rights reserved by the individual copyright holders.

** Further on request